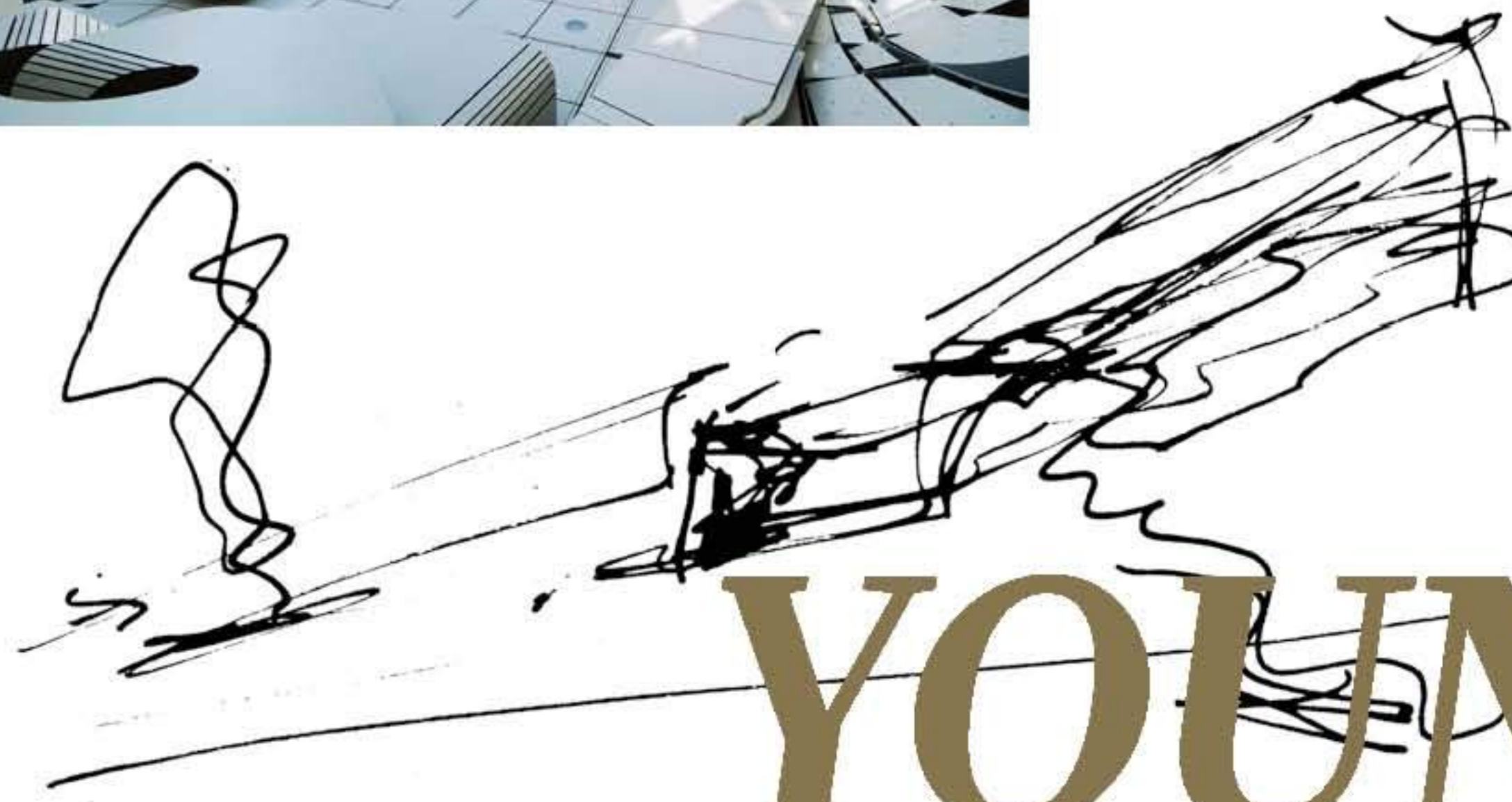


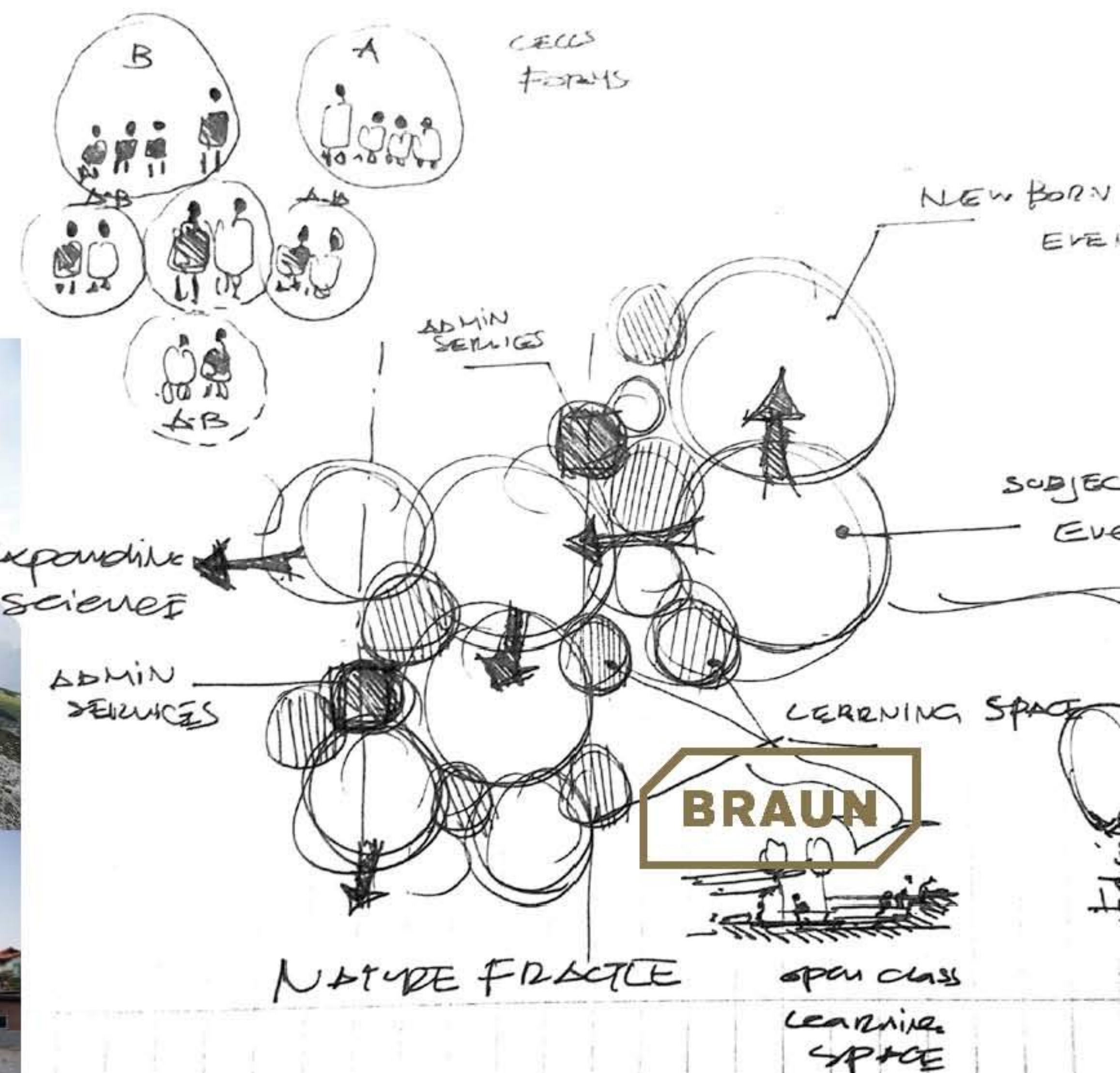


CHRIS VAN UFFELEN



YOUNG VISIONARIES

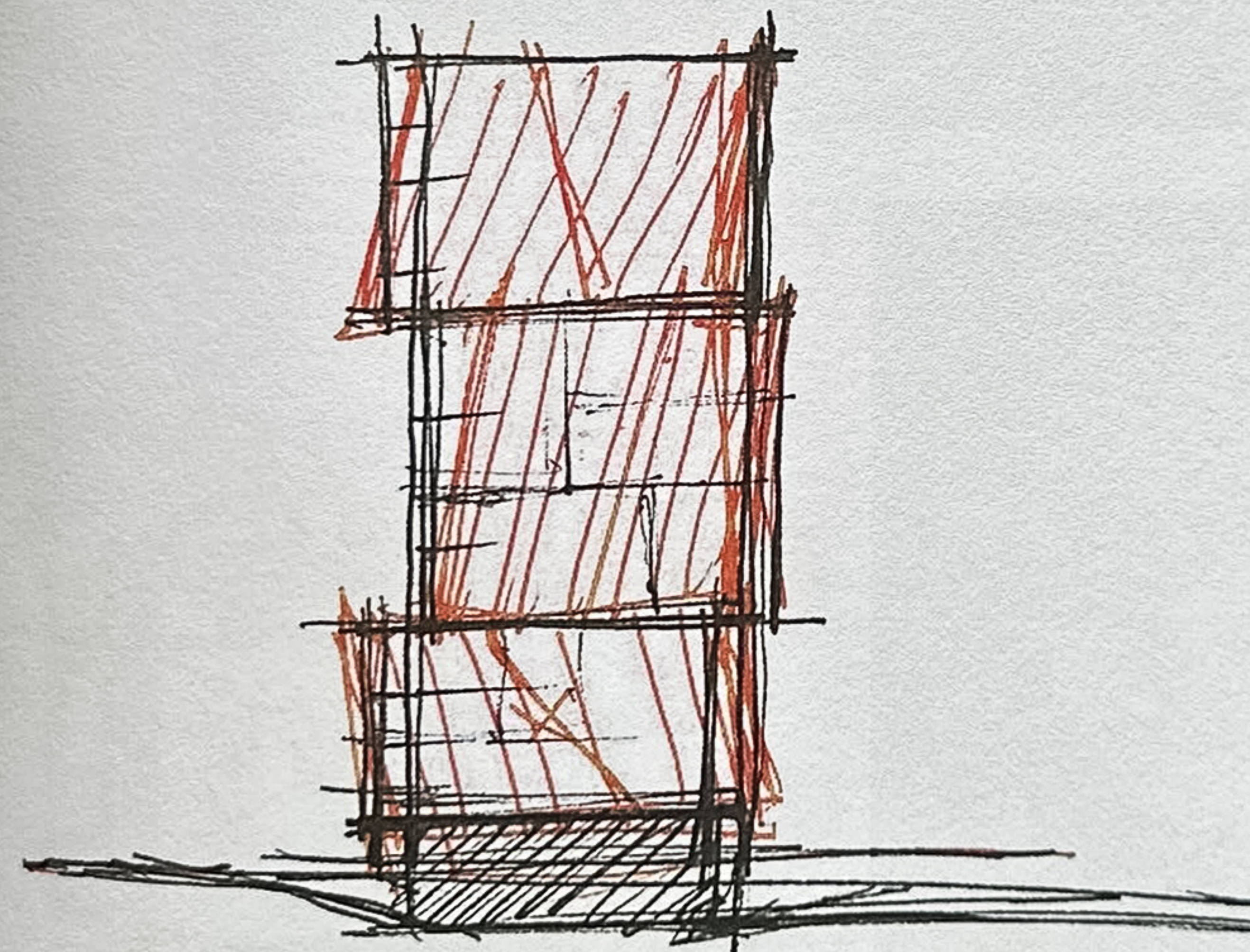
THE NEW GENERATION OF ARCHITECTS





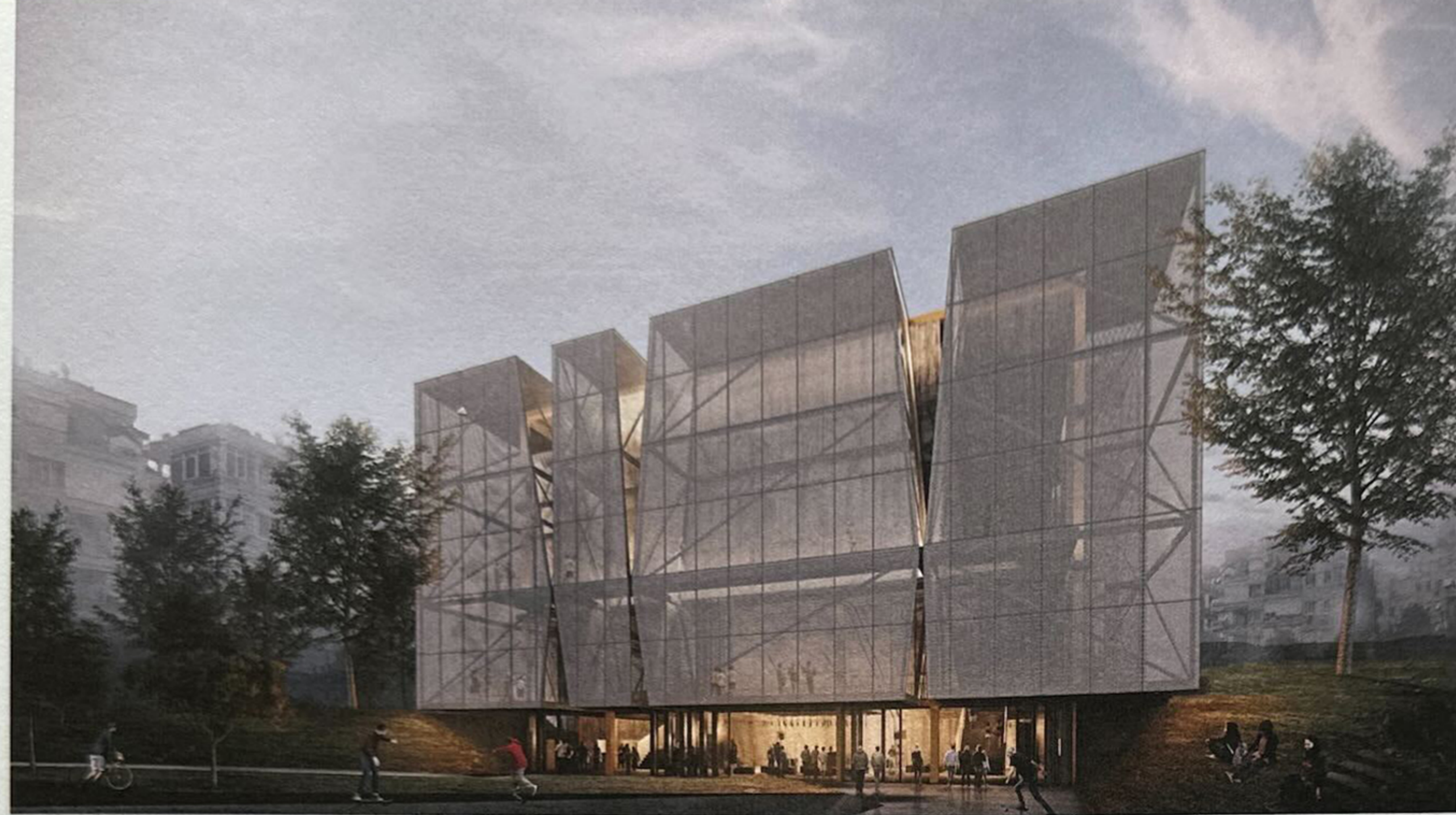
SALON

ISTANBUL, TURKEY



Vertical stacking of an existing housing block shows a novel approach to modern architecture.

Founded in 2010 by **Alper Derinbogaz** (born 1982), Salon is an international design practice based in Istanbul, Turkey, and Los Angeles, USA, developing projects within the fields of architecture, art, product design, interior design and urbanism. The spaces created by Salon emerge from the varying aspects, scales and moments that surround them. Every involvement is an intervention, and this is underlined by the practice's aim of comprehending the existing, expanding its merits to produce architectural designs that redefine the living environment and design novel, intense experiences. In his practice, Alper Derinbogaz investigates the possibilities of the physical environment through the potential relationships between space and time. His designs greatly vary in scale from museums to installations, his work is mostly intended to uncover and question the essential elements of the given site and theme. At the 14th Venice Architecture Biennale in 2014 he presented his debut work, the Pavilion of Turkey. He currently runs an architectural design studio at the ITU as a senior lecturer.

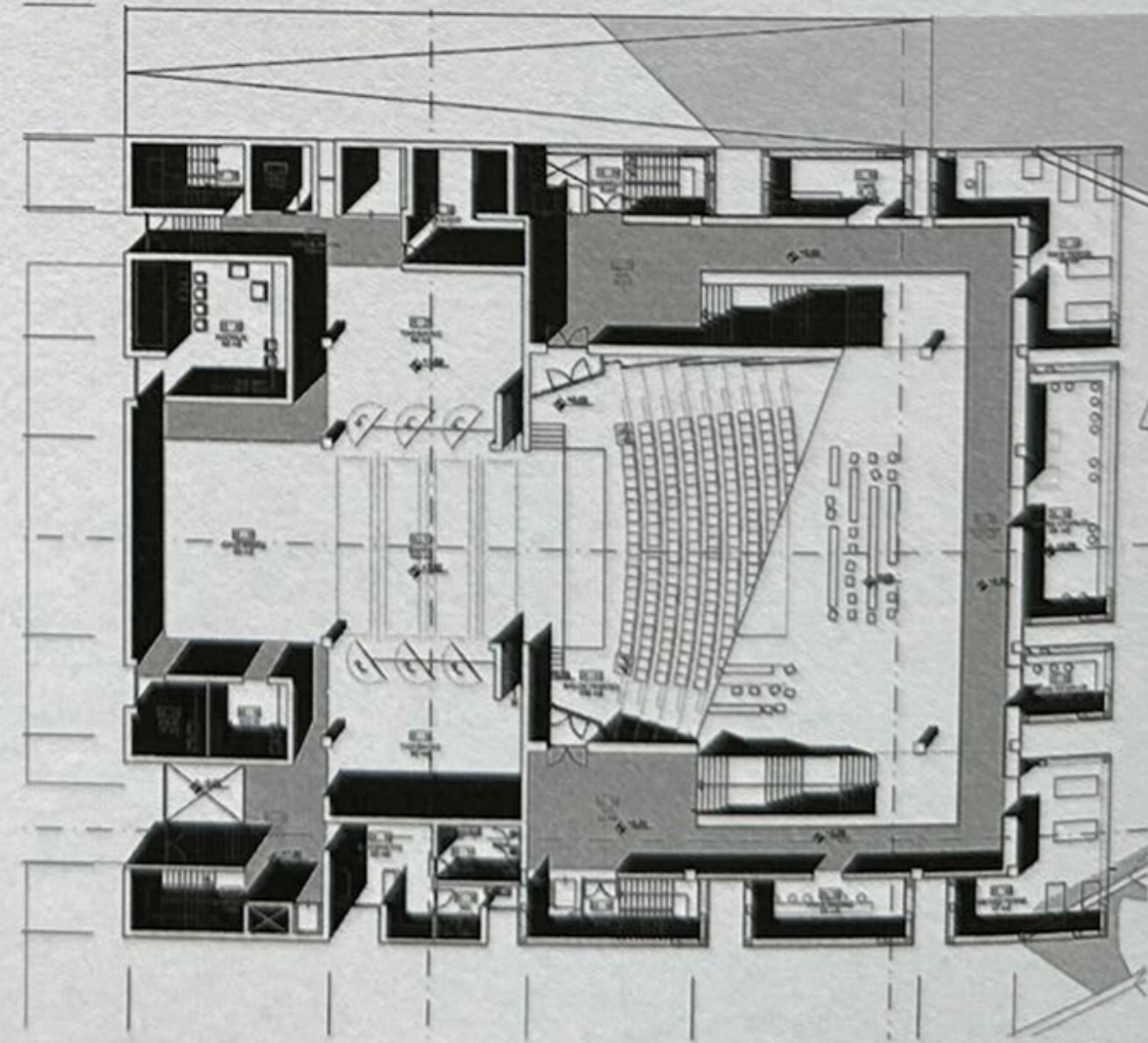


Bright openings create a sense of transparency.

The interior is framed by rough structures that function as frames for the diverse activities.

The ground floor plan presents the transition from heavy and solid to light and transparent.

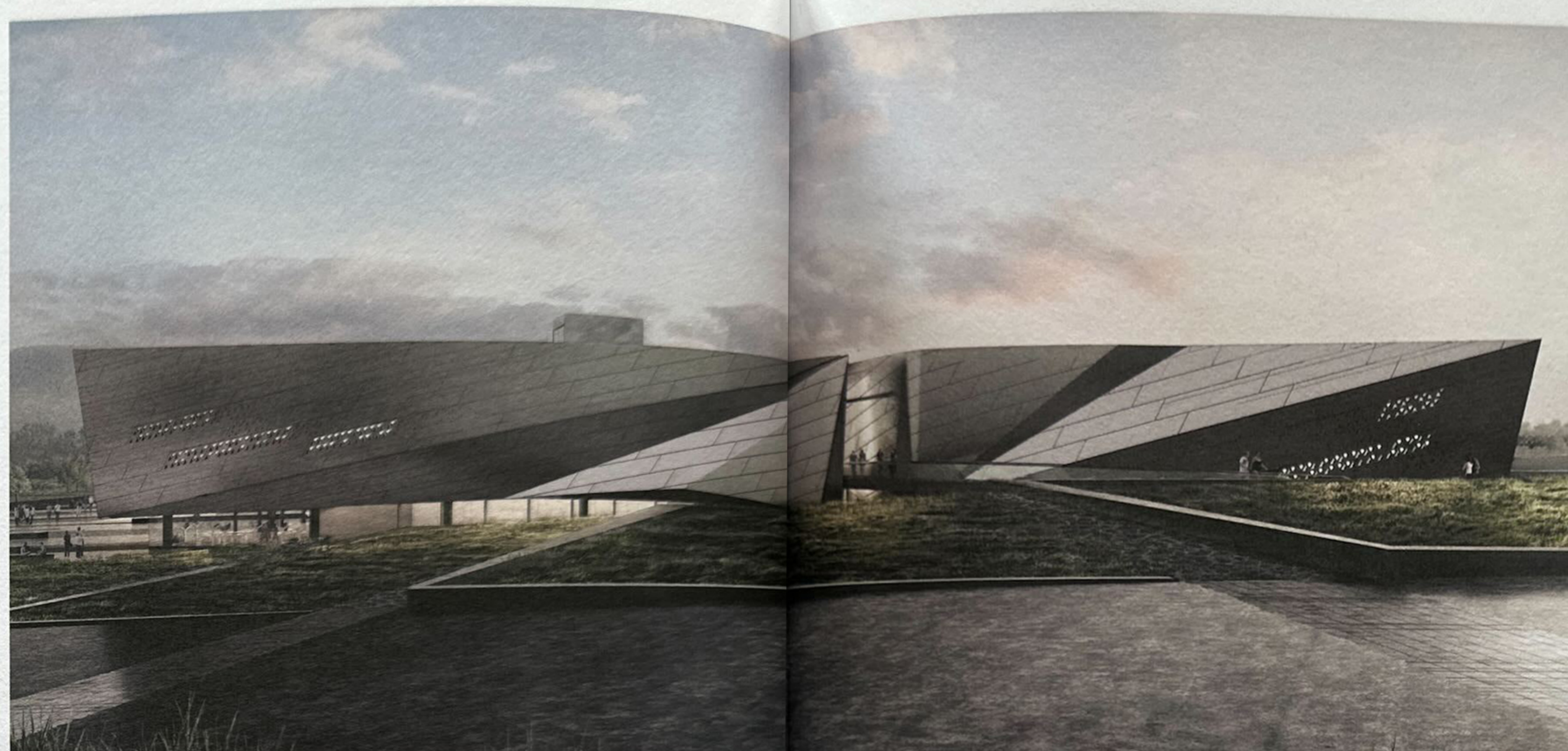
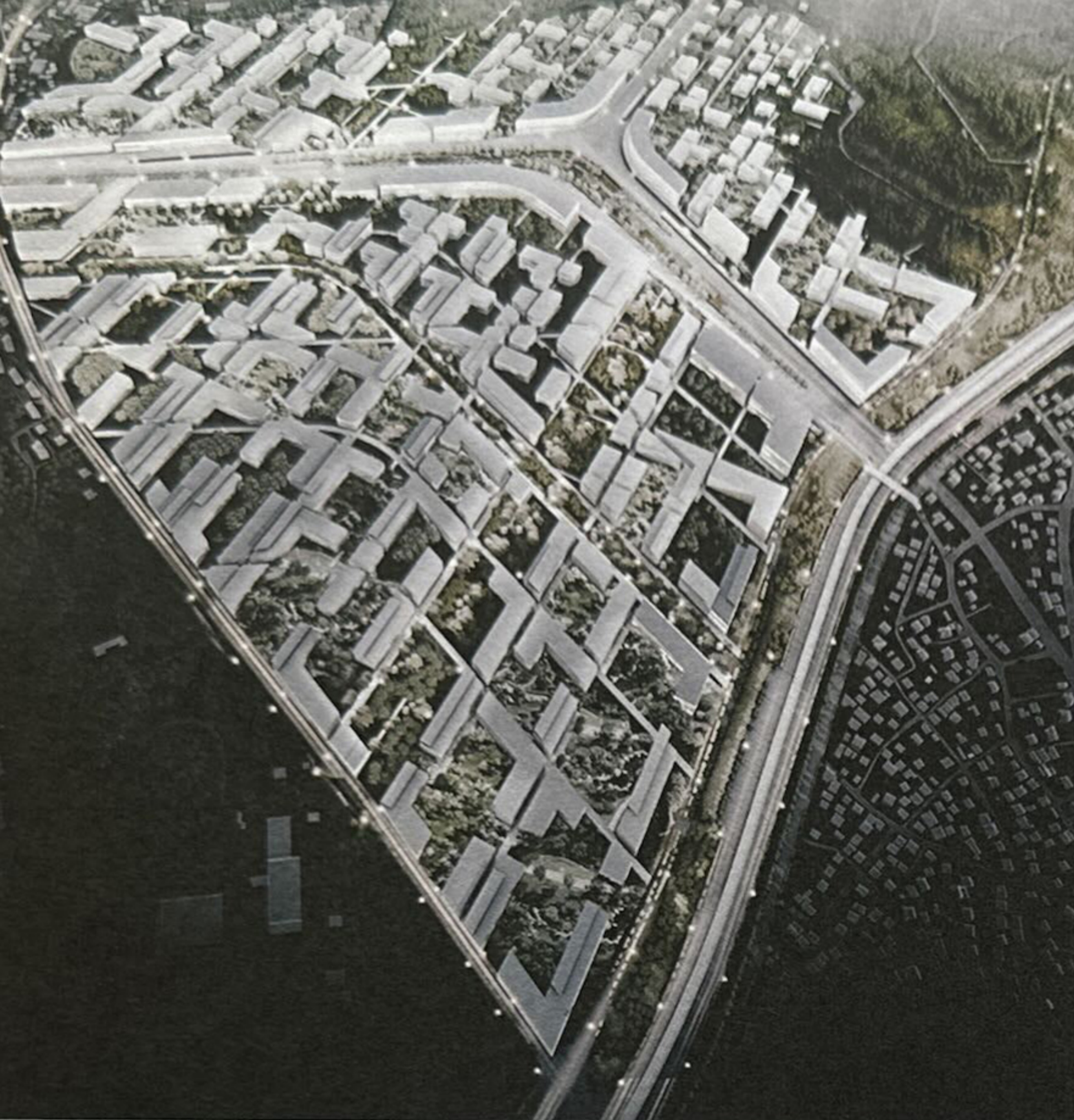
Parkopera emphasizes the idea of creating architecture that is flexible and welcoming.



A clear yet rough architectural language underlines the diverse range of possible uses.

Parkopera designed in 2015 in **Antalya, Turkey**, is a multi-purpose cultural facility that unites the neighborhood with its surroundings. Parkopera hosts shows, concerts, and similar activities at certain hours of the day. Its "lounge" is integrated into everyday life in the park during the day, and the aim is to host cultural events and to make those events accessible to everyone on the neighborhood scale. The "lounge" opens out towards the park and seeks to harmonize with the daily rhythm of neighborhood life.

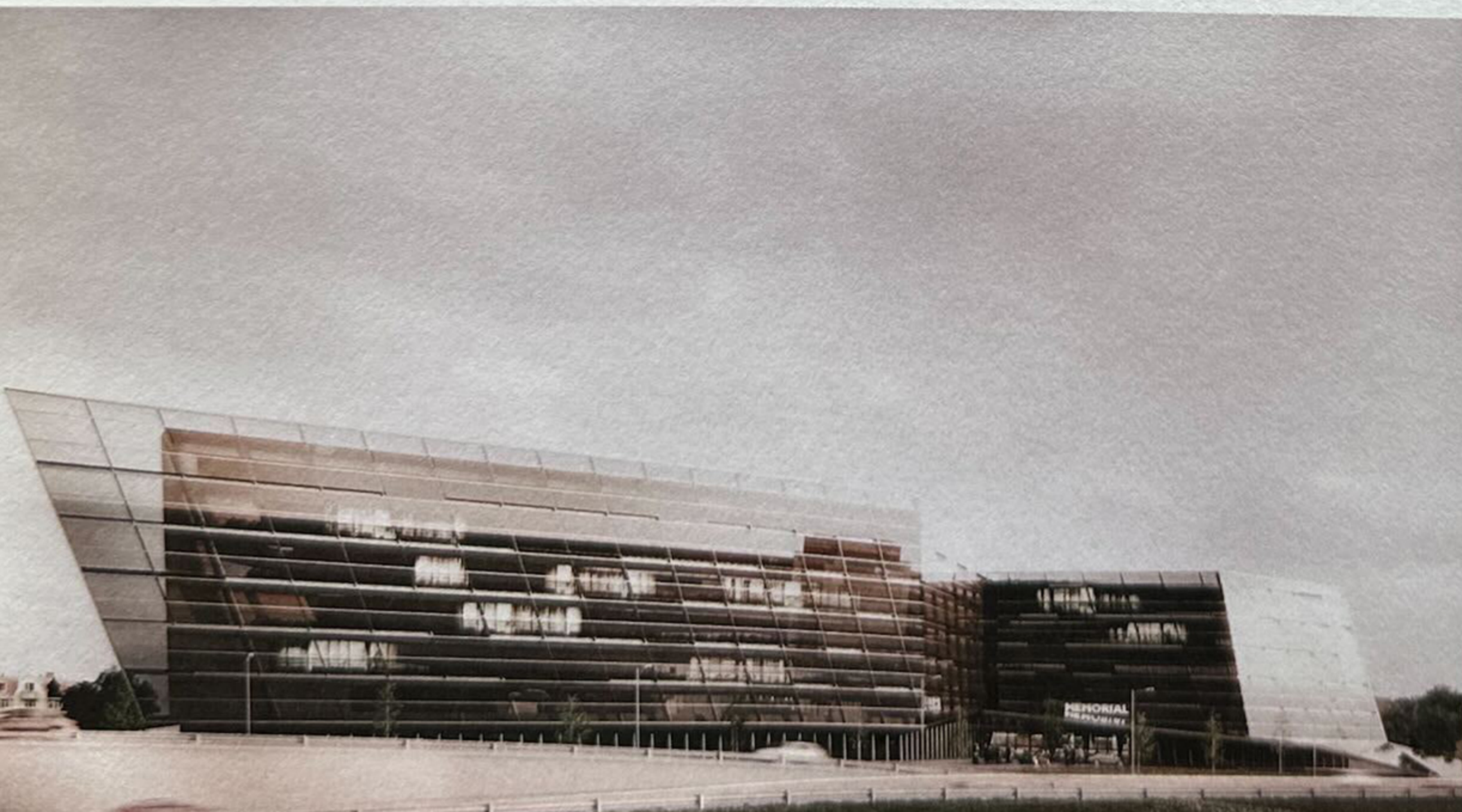
The platform is used as an audience platform for different types of shows. The lodges attached to the platform, on the other hand, have been designed as a mezzanine floor to serve either as a café, bookstore, bistro or to accommodate similar functions.



Çesme House, Izmir, Turkey, 2016, a summer house correlating with its natural surroundings



Architecture by Salon breaks up conventional thinking to create innovative and flexible design solutions.



Green Hub, Antalya, Turkey, competition, 2015, a master plan concept that pays attention to the local and cultural environment

Istanbul City Museum, Istanbul, Turkey, ongoing, the exterior communicates with the historic city walls nearby

Ataköy Medical Healthcare, Istanbul, Turkey, 2015, a hospital building connecting technology, comfort and functional pragmatism



Science Island, Kaunas, Lithuania, competition, 2016, at the interface between natural landscape and mankind's curiosity to reveal the secrets of our universe