



the world's most visited architecture website

- [Projects](#)
- [News](#)
- [Articles](#)
- [Materials](#)
- [Interviews](#)
- [Competitions](#)
- [Events](#)
- [Classics](#)
- [More](#)

[Log in](#) | [Sign up](#)

CTHB Law Office / Salon Architects

11 NOV
2013

[Projects](#) [Built Projects](#)
[Selected Projects](#) [Office Buildings](#)
[Istanbul Interiors](#)
[Institutional Architecture Turkey](#)

Architect: [Salon Architects](#)
 Photographer: [Büşra Yeltekin](#)



[Bookmark](#)

164

[Like](#)



27

Tweet

458

Architects: **Salon Architects**

Location: **Istanbul, Turkey**

Design: **Alper Derinboğaz, Melike Altınışik**

Team: **Samim Magriso, Gül Ertekin, Ayda Agaoglu**

Application: **Yeditepe Aral Yapı**

Area: **250.0 sqm**

Project Year: **2013**

Photographs: **Büşra Yeltekin**





© Büşra Yeltekin

From the architect. CT Law Office is a refurbished space inside an office building that is structured within a repetitive standard building grid. The interior formation, however, challenges this rigid grid to create a tension between the linear and nonlinear.





© Büşra Yeltekin

The corridor behaves as a transitional zone between the lawyers and the clients. This

longitudinal space divides the service spaces from offices and then end with the management room. The colors and materials distinguish the surfaces by their use. As the dark gray zone clusters the service functions, the wooden surfaces cover storage spaces.





© Büşra Yeltekin

The slim linear lighting on the ceiling guides the visitors between the spaces that are organized hierarchically in terms of their use. Lighting fixtures are specifically designed to align the tectonic of the design language. Depending on the viewers' perception the folded metal plate is on one hand is a horizontal line and on the other hand a nonorthographic object like the mathematical conception of referential relationships, covariance.



© Büşra Yeltekin

All the forms are meaningful at dynamic perspectives rather than certain angles which are hard to represent in two dimensional representation mediums that needs to be spatially experienced. CT Law Office located inside a very conventional orthogonal office building structure represents the inherent qualities of the law institution with its nonlinear yet unbiased and strong tectonics. The tensions between the orthodox rectangular volumes and the oblique surfaces as well as the contrast between cold and warm materials also embody the occupant's intrinsic values of their profession.



SECTION B-B
SCALE: 1/100

Section



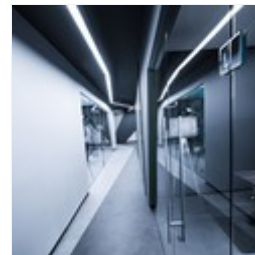
© Büşra Yeltekin



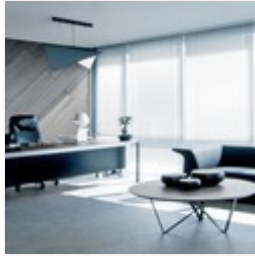
© Büşra Yeltekin



© Büşra Yeltekin



© Büşra Yeltekin



© Büşra Yeltekin

© Büşra Yeltekin



© Büşra Yeltekin

© Büşra Yeltekin



Section



Section



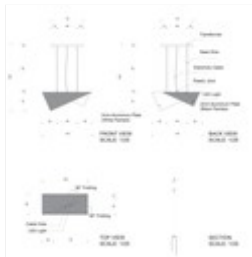
Section



Plan



Site Plan



Detail



Axon



Location to be used only as a reference. It could indicate city/country but not exact address.

Cite:

"CTHB Law Office / Salon Architects" 11 Nov 2013. [ArchDaily](http://www.archdaily.com/446677/cthb-law-office-salon-architects/). Accessed 18 Nov 2015.

<<http://www.archdaily.com/446677/cthb-law-office-salon-architects/>>