



the world's most visited architecture website

'Haze' Pavilion Proposal / Salon2

15 FEB
2013

by Alison Furuto

[Articles](#)

[Bookmark](#)

6

Like

24

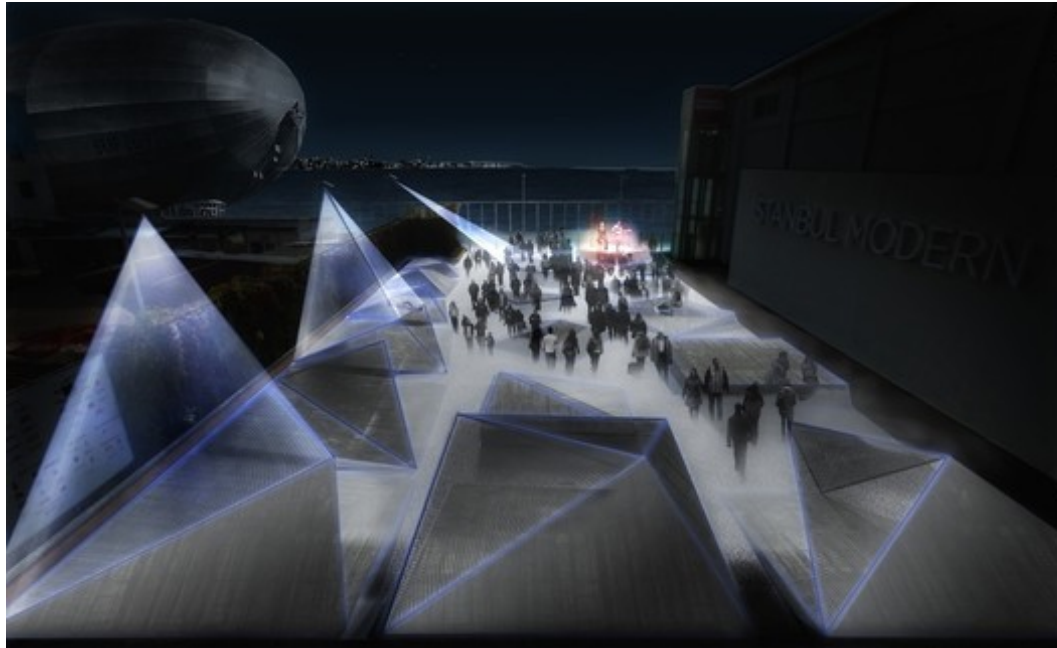
Tweet



Courtesy of Salon2

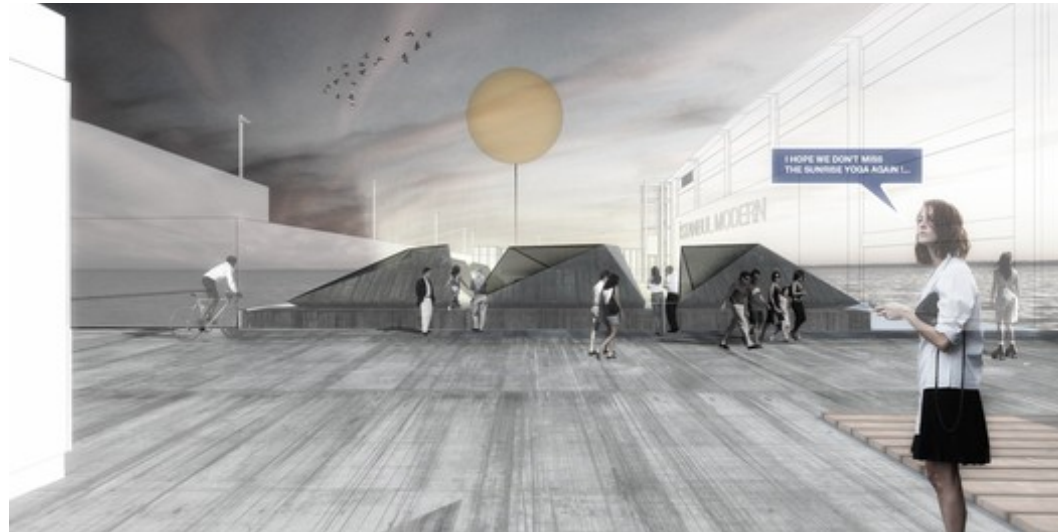
Designed by **Salon2**, their 'Haze' Pavilion proposal aims to transform **Istanbul Modern** into a garden of stages while preparing an unexpected architectural condition for the distant relationship of İstanbul and the sea. Through an experiential design, the pavilion shifts the perception of a specific shore condition of the Tophane Pier and creates its own cool microclimate in the warmest days of the year it to accommodates various events. More images and architects' description after the break.

The space brings water and people together in a unique way in the middle of a 1.5 km customs border wall, which is located in the city center. The pavilion offers self-organizing events for public to allow the diffusion of social clusters and to create the mutual understandings between them. It has 3 different stages that are surrounded with various seating platforms as well as shaded lodges.



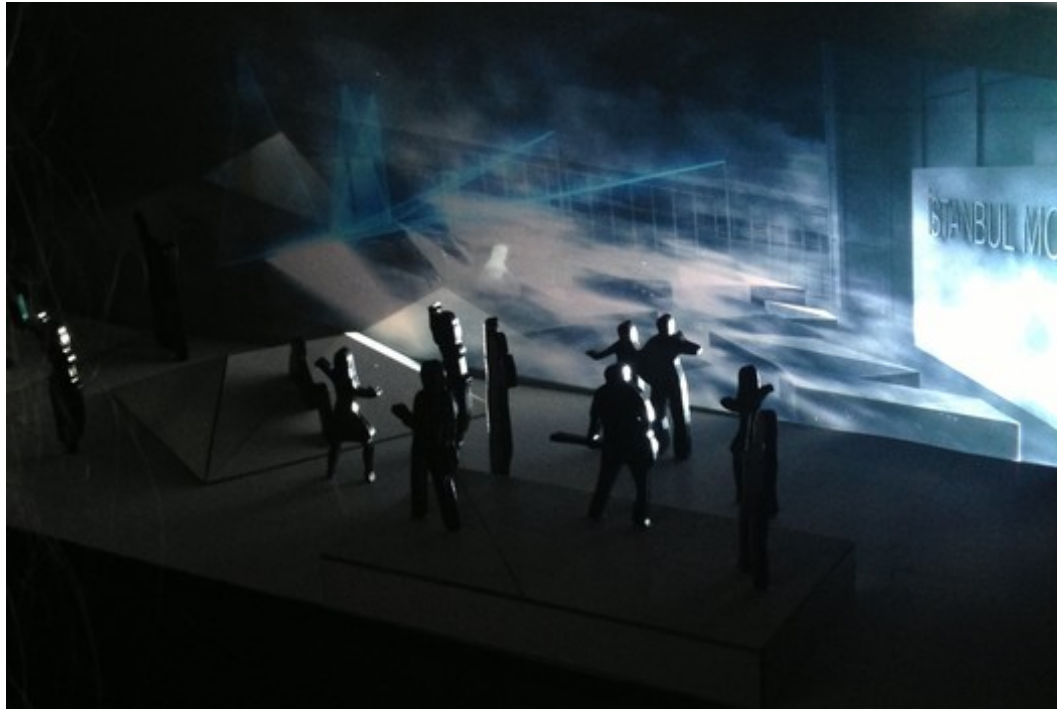
Courtesy of Salon2

The mystery of this hazy space that resembles like floating platforms in the water is the cool air that consists of micro water particles which has been sprayed from about 200 nozzles. As the day gets darker, the space turns into a virtual installation that is fusing the digital and physical almost like it merges the sea and the land.



entrance / Courtesy of Salon2

Platforms, lodges and seating elements are made out of Ferro-concrete lightweight modules, which is different than the common use of concrete in Istanbul. After summer these modules are going to be re-used in different shores with different functions to activate these selected areas.



Courtesy of Salon2

Architects: **Salon2** Location: **Istanbul, Turkey** Design Team: **Alper Derinbogaz, Melike Altınışik; In collaboration with Refik Anadolu** A/V Artists: **Ferdi Alici**
Project Team: **Samim Magriso, Ahmet Ünveren, Aykut Özen, Gül Ertekin**
Senior Consultant: **BuroHappold** Associate: **Guvenc Topcuoglu** Engineering
Consultants: **Alasdair Young, George Keliris, Rasti Bartek** Thanks to: **Yasemin Keskin Enginöz, Banu Durmusoglu, Ceyhun Derinboğaz, Enise Burcu Karaçizmeli, Melih Altınışik, Salih Küçüktuna, Oğul Öztunç, Hülya Deniz, Wedream.co** Sponsors: **BuroHappold, Çimsa**



beach / Courtesy of Salon2

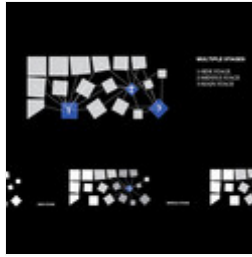
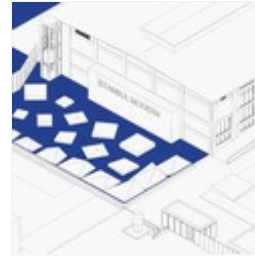


diagram 03



Courtesy of Salon2

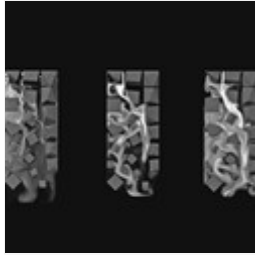
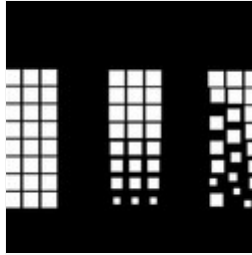


diagram 02



Courtesy of Salon2



site diagram



entrance / Courtesy of Salon2



Courtesy of Salon2



Courtesy of Salon2



Courtesy of Salon2